

# Souls - Australian Small Companies Fund 6419

## Performance Evaluation

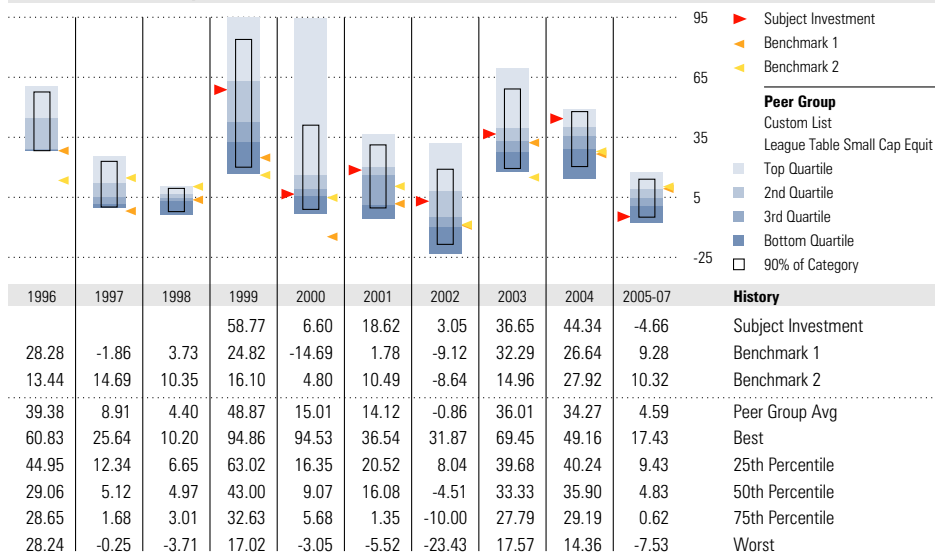
**Currency**  
AUD

**Benchmark 1**  
S&P/ASX Small Ordinaries Accumulation

**Benchmark 2**  
S&P/ASX 300 Accumulation

**Morningstar Category**  
Australia - Equity Regio...

### Return vs. Peer Group



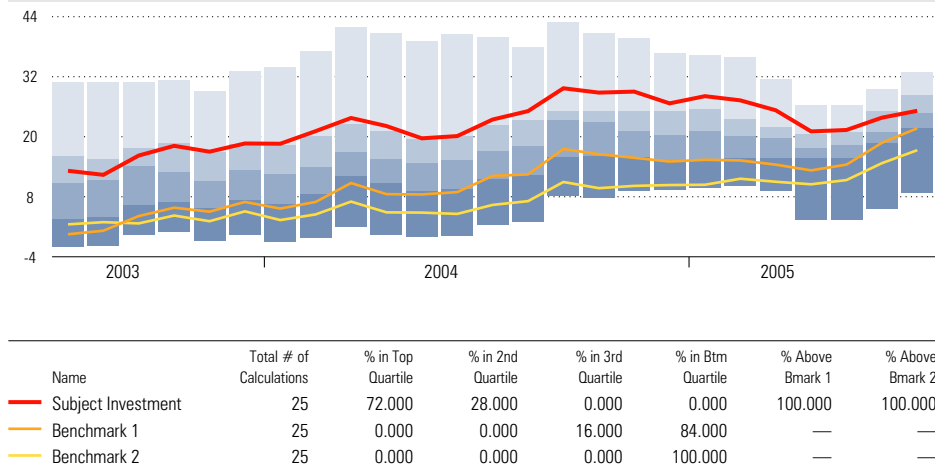
### Trailing Returns as of 2005-07-31

	Inv %	Bmark 1%	Bmark 2%
YTD	-4.66	9.28	10.32
1 Month	1.38	3.79	2.65
3 Months	3.10	13.24	10.99
6 Months	-10.23	4.52	8.75
1 Year	15.42	25.90	29.02
2 Years	26.27	25.37	23.49
3 Years	25.19	21.69	17.31
4 Years	21.39	15.46	11.63
5 Years	18.25	9.80	10.42
10 Years		10.02	11.77

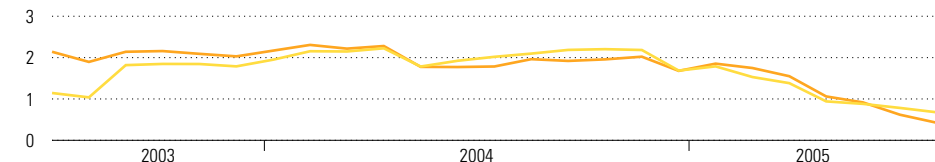
### Return/Risk Analysis 2000-08-01 to 2005-07-31

	Inv	Bmark 1	Bmark 2
Cumulative Rtn	131.24	59.56	64.14
Standard Deviation	13.63	13.08	10.23
Sharpe Ratio	0.95	0.34	0.50
Sortino Ratio	1.75	0.56	0.83
Calmar Ratio	10.16	2.96	4.10
Best Month	9.41	9.65	6.77
Worst Month	-9.73	-9.33	-6.57
Best Quarter	19.17	16.64	13.23
Worst Quarter	-12.92	-11.94	-11.86
% of Up Month	68.33	63.33	65.00
% of Down Month	31.67	36.67	35.00
Avg Monthly Gain	3.48	3.13	2.65
Avg Monthly Loss	-2.92	-3.14	-2.47
Gain Std Dev	9.22	7.77	6.12
Loss Std Dev	6.88	7.44	5.56
Longest Up Streak (Mo)	8	8	10
Run Up %	36.63	35.03	27.13
Start Date	2003-02-28	2003-02-28	2004-04-30
End Date	2003-10-31	2003-10-31	2005-02-28
Longest Down Streak (Mo)	3	4	3
Run Down %	-12.92	-8.42	-7.97
Start Date	2005-01-31	2000-08-31	2002-11-30
End Date	2005-04-30	2000-12-31	2003-02-28
Max Drawdown (Mo)	3	13	13
Max Drawdown (%)	12.92	20.09	15.65
Peak Date	2004-12-31	2000-07-31	2001-12-31
Valley Date	2005-03-31	2001-08-31	2003-01-31

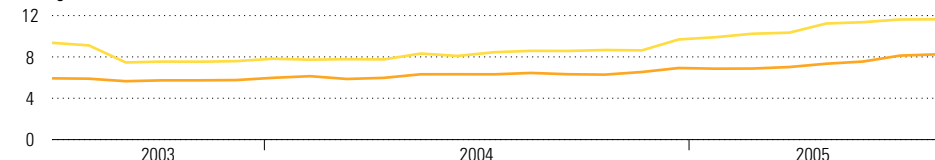
### Rolling Performance 36 months per calculation



### Information Ratio



### Tracking Error



### Relative Performance 2000-08-01 to 2005-07-31

	Bmark 1	Bmark 2
Excess Return	8.46	7.83
Alpha	8.47	8.33
Beta	0.88	0.87
R-Squared	0.72	0.42
Tracking Error	7.45	10.48
Information Ratio	1.14	0.75
Treynor Ratio	14.65	14.90
Up Capture Ratio	112.66	107.26
Down Capture Ratio	68.26	48.88
Up Number Ratio	0.95	0.82
Down Number Ratio	0.77	0.57
Up Percentage Ratio	0.58	0.51
Down Percentage Ratio	0.23	0.19